



## 16/60 Goodwin Terrace Burleigh Heads QLD

2 2 1

This magnificent ocean front apartment is situated on a premium beachfront site in one of Burleigh's iconic buildings 'La Pacificque' and affords glorious uninterrupted North Easterly views of the ocean, which can never be built out.

Superbly located across the road from the world-famous patrolled beaches of Burleigh. This large 129 sqm, 5th floor, two-bedroom apartment provides you with space, peacefulness, privacy and the most magnificent views of the Burleigh shoreline right through to the Surfers Paradise city skyline.

Offering a spacious light filled living and dining area, galley kitchen, which includes a breakfast bar and plenty of bench and cupboard space. The two bedrooms are good sized, the master with ensuite, both bedrooms feature balcony

**Price** : \$ 1,625,000

**View** : <https://www.laceywest.com.au/sale/qld/gold-coast/burleigh-heads/residential/unit/7740053>



**Will West**  
07 5576 6616



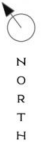
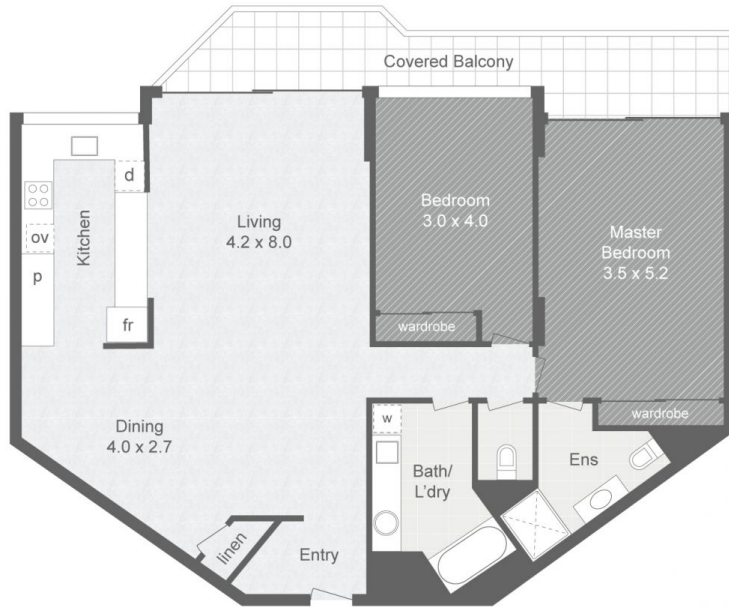
LACEY WEST

WILL WEST 0404 227 952

16/60 GOODWIN TERRACE  
BURLEIGH HEADS

BED 2  
BATH 2  
CAR 1

INTERNAL 116m<sup>2</sup>  
EXTERNAL 13m<sup>2</sup>  
CARSPACE 14m<sup>2</sup>  
TOTAL 143m<sup>2</sup>



Plans shown are for presentation purposes only and are not part of any legal document or title. They are subject to errors, omissions, inaccuracies and should not be used as a sole and accurate reference. Interested parties should make their own inquiries using independent sources.