



**27/19-23 George Street East Burleigh Heads QLD**

2  2  2 

2 bedroom, 2 bathroom unit with two car spaces is too perfect.

Situated in the sought after beachside pocket of Burleigh Heads, this functional top floor unit in George Street East enjoys ocean and bushland views, is nestled next to Burleigh Heads National Park, is walking distance to Tallebudgera Creek, Burleigh Headland and James Street CBD.

- \* Two generous bedrooms with built in robes
- \* Two bathrooms main bathroom with in built laundry
- \* Two car spaces side by side plus storage shed
- \* Large master bedroom with ensuite and built in robe and access to your private balcony

**Type** : Unit

**View** : <https://www.laceywest.com.au/lease/qld/gold-coast/burleigh-heads/residential/unit/8127750>



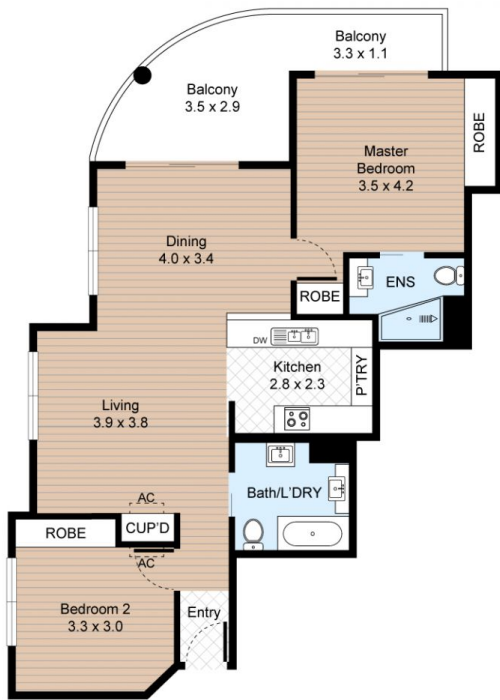
**Lacey West Rentals**  
**07 5576 6616**

[For full version visit the website](https://www.laceywest.com.au)

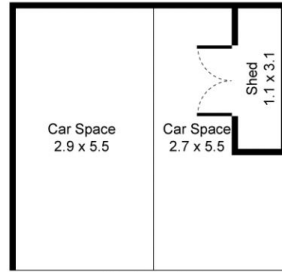
<https://www.laceywest.com.au>

# Unit 27, 19-23 George Street East, Burleigh Heads

2 Bed 2 Bath 2 Car



FLOOR PLAN



CAR SPACE/SHED

Internal : 78m<sup>2</sup>  
External : 44m<sup>2</sup>



All information contained herein is gathered by Little Hinges. Whilst the scanning technology is highly reliable, we cannot guarantee its accuracy and interested parties should rely on their own enquiries.