



22 Penguin Parade Burleigh Waters QLD

4 4 4

Discover this unique waterfront home set on a spacious 895m² block with a large 40m wide waterfrontage onto Pelican Lake. Just a 10-minute walk from beautiful Burleigh Beach and all the lifestyle choices Burleigh offers.

With breathtaking lake views and distant hinterland mountain scenery and nestled in a quiet cul-de-sac in one of the most desirable Streets in Burleigh Waters.

Filled with character and currently set up for dual living, the upper level of this home boasts a 45-degree pitched roof and a master bedroom with an ensuite, walk in robe. There is also a 2nd bedroom, both bedrooms with access to the balcony as well as a renovated bathroom with bathtub.

Type : House
Price : Offers Over \$2,950,000
Building Size : 287.5 sqm
Land Size : 895 sqm
View : <https://www.laceywest.com.au/sale/qld/gold-coast/burleigh-waters/residential/house/8149221>



Charles Thackwell
07 5576 6616

[For full version visit the website](https://www.laceywest.com.au)

<https://www.laceywest.com.au>



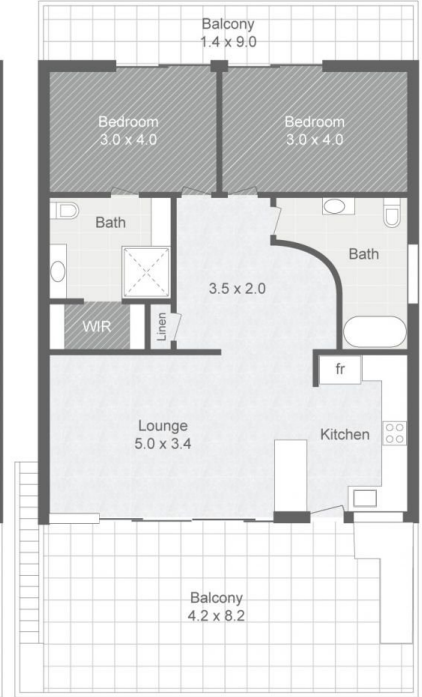
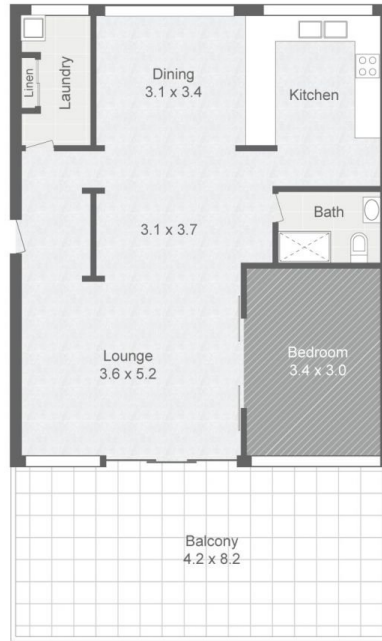
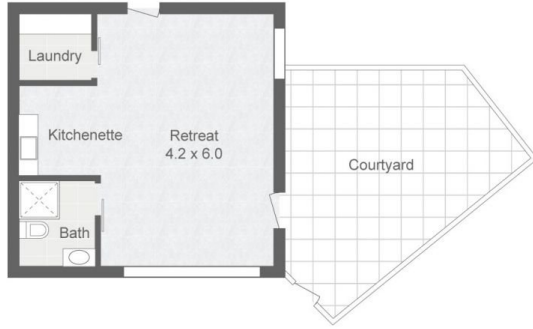
LACEY WEST

22 PENGUIN PRD
BURLEIGH WATERS

BED 4
BATH 4
CAR 4

INTERNAL 170m²
EXTERNAL 81.5m²
RETRTEAT 36m²

TOTAL 287.5m²



Plans shown are for presentation purposes only and are not part of any legal document or title. They are subject to errors, omissions, inaccuracies and should not be used as a sole and accurate reference. Interested parties should make their own inquiries using independent sources.